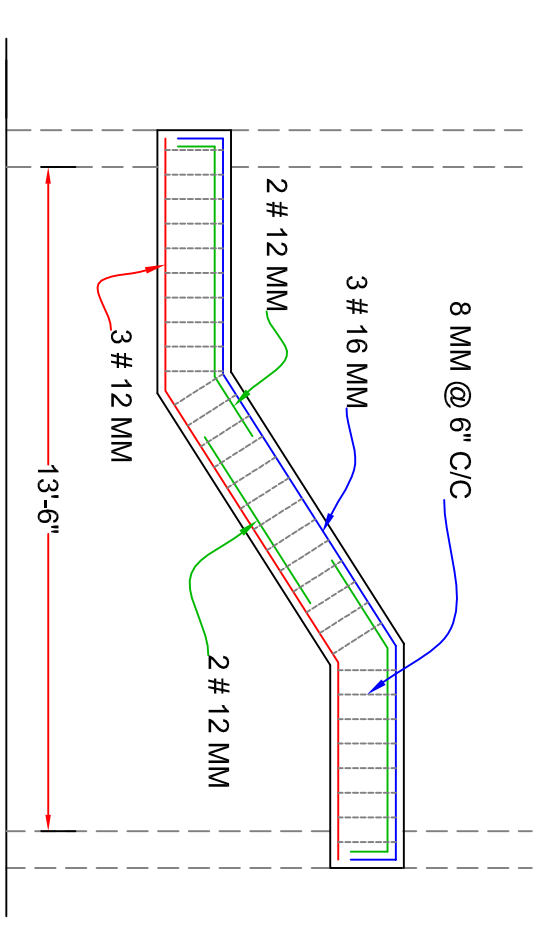
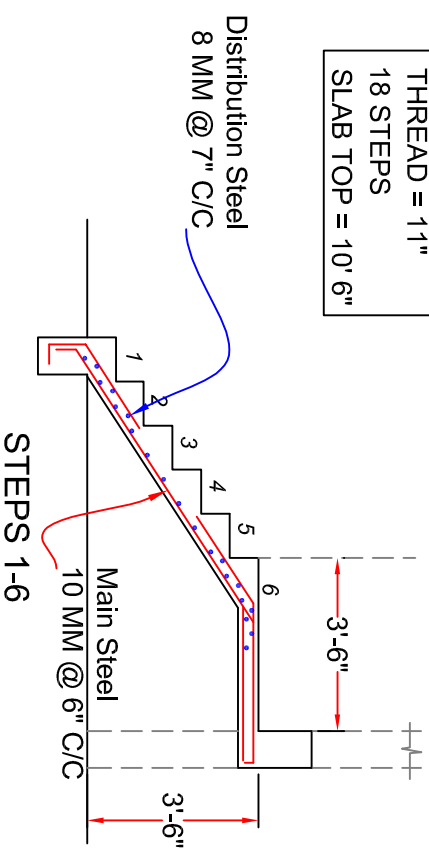


STAIRCASE DETAILS		SECOND FLIGHT	
THICKNESS	5"	MAIN STEEL	10 MM @ 6 Nos
		DIST STEEL	8 MM @ 7" C/C

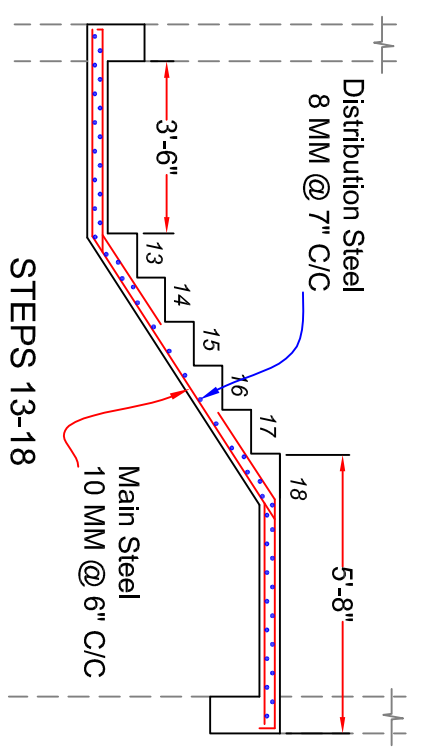


BEAM	SIZE	BOTTOM	EXTRA BARS	TOP
Z-BEAM	9" X 18"	3 # 12 MM	2 # 12 MM	3 # 16 MM

RISER = 7"
 TREAD = 11"
 18 STEPS
 SLAB TOP = 10' 6"



STAIRCASE DETAILS		FIRST FLIGHT	
THICKNESS	5"	MAIN STEEL	10 MM @ 6 Nos
		DIST STEEL	8 MM @ 7" C/C



STAIRCASE DETAILS		THIRD FLIGHT	
THICKNESS	5"	MAIN STEEL	10 MM @ 6 Nos
		DIST STEEL	8 MM @ 7" C/C

STAIRCASE STRUCTURAL DESIGN